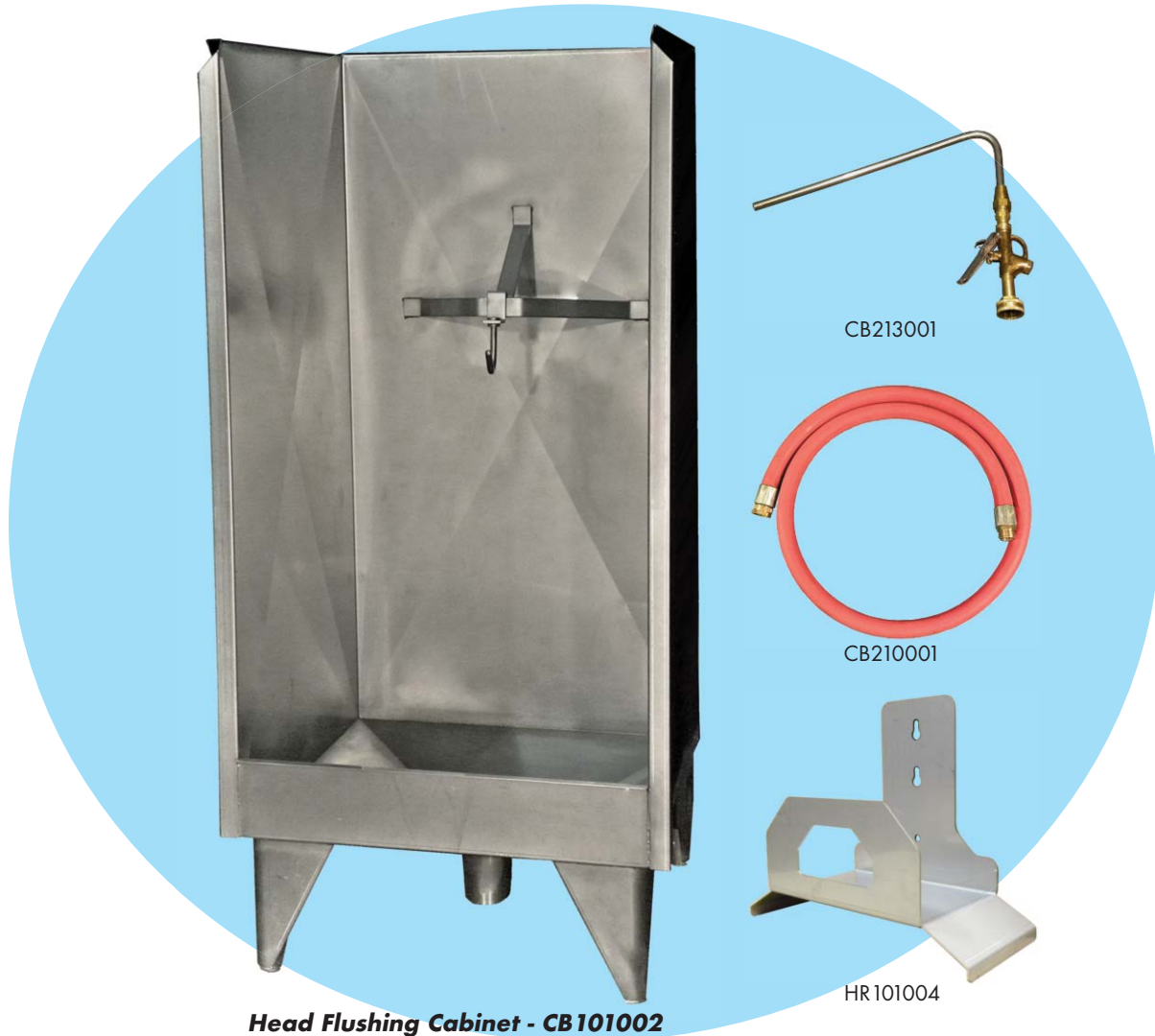


# Head Flushing



**Head Flushing Cabinet - CB101002**

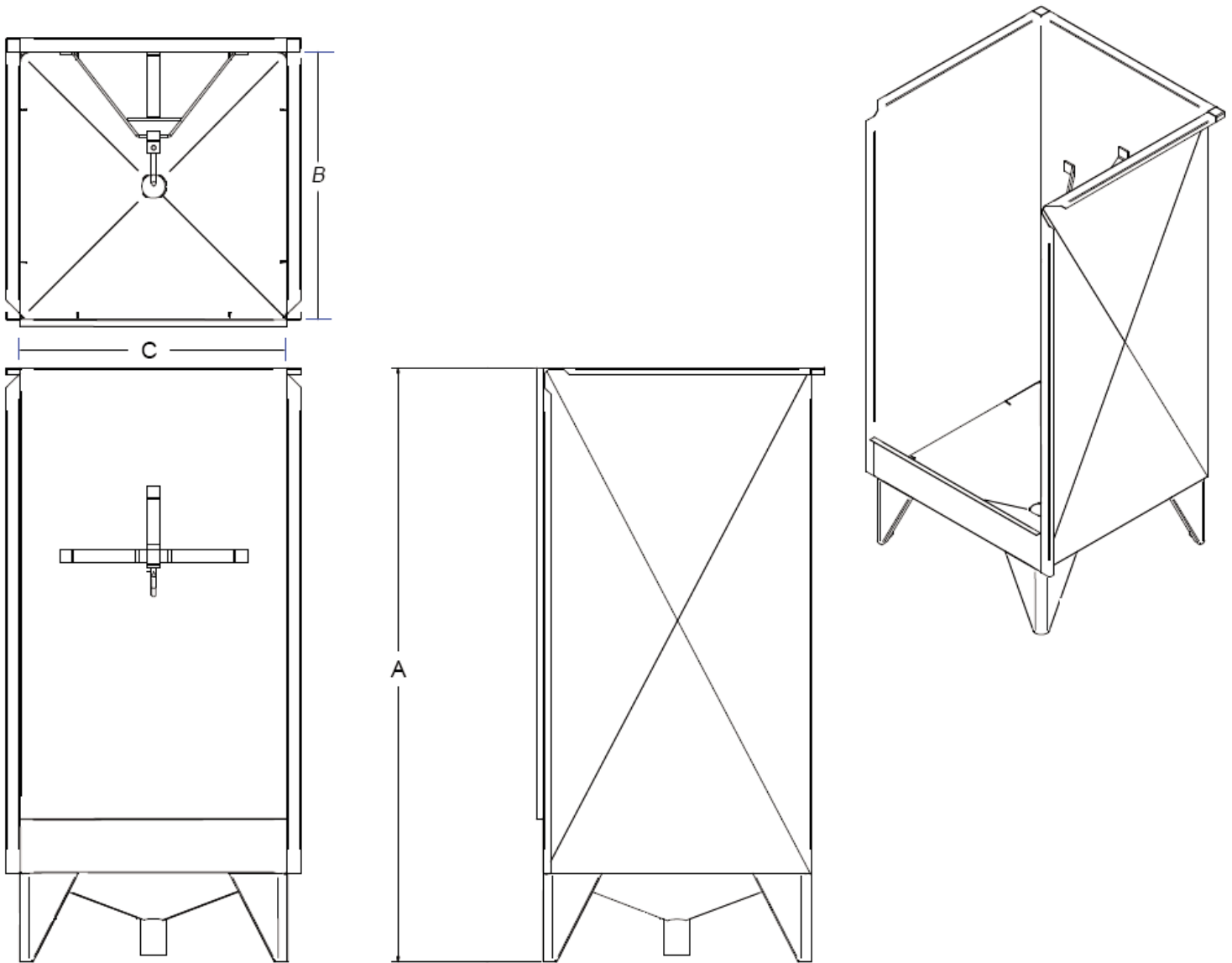
The Stainless Steel Head Flushing Cabinet is designed for use in the food processing industry. Used in the process for cleaning out cattle and calves nostrils and mouths. The head is suspended from the swivel hook while mouth and nostrils are thoroughly flushed. The cabinet comes complete with a removable swivel hook, 6' of 3/4" hose with fittings on each end and a special self-closing nozzle fitted with a 12" length of 3/8" stainless steel tube to reach the necessary areas.

**Optional HOSE HOLDER:** Heavy duty type 304 stainless steel construction designed for wet and demanding packinghouse type applications. Overall Dimensions: 11.5" x 9.375" x 5.25" Weight Capacity: 100 Lbs.

## **MATERIAL CONSTRUCTION:**

We've constructed this Head Flushing Cabinet from heavy-duty 14 gauge T-304 Stainless Steel. The top, sides and front of cabinet are reinforced with hemmed edges for added strength. The 6" edge at front of cabinet eliminates splash out during washing operation. The bottom of the cabinet slopes to a 4" diameter drain located approximately 3" above the floor. The cabinet is 66" tall overall and available in three sizes.

**Distributed by:**



Item # \_\_\_\_\_

Qty: \_\_\_\_\_

Job: \_\_\_\_\_

Model #	Description	Material	"A" Height	"B" Length	"C" Width
CB101001	Head Flushing Cabinet	Stainless Steel	66"	24" ID	24" ID
CB101002	Head Flushing Cabinet	Stainless Steel	66"	30" ID	30" ID
CB101003	Head Flushing Cabinet	Stainless Steel	66"	36" ID	36" ID
CB213001	Head Flushing Nozzle	Stainless Steel/Brass		12"	
CB210001	Head Flushing Hose	Rubber	1"	6'	1"
HR101004	Stainless Steel Hose Holder	Stainless Steel	11.5"	5.25"	9.375"

**Manufactured by:**

**DC TECH INC.**

619 E 19th Street  
Kansas City, MO 64108-1743

**Toll Free: 877-742-9090**

**Fax: 816-842-4121**

**www.dctech-inc.com**

**sales@dctech-inc.com**